

Fig. 1. LLC peculiarities.
The image results to be ill-informative.

Fig. 2. An example of SLC
work for the same model as in Figure 1.

Fig.3 The SLC+LLC method gives
excellent results in practice

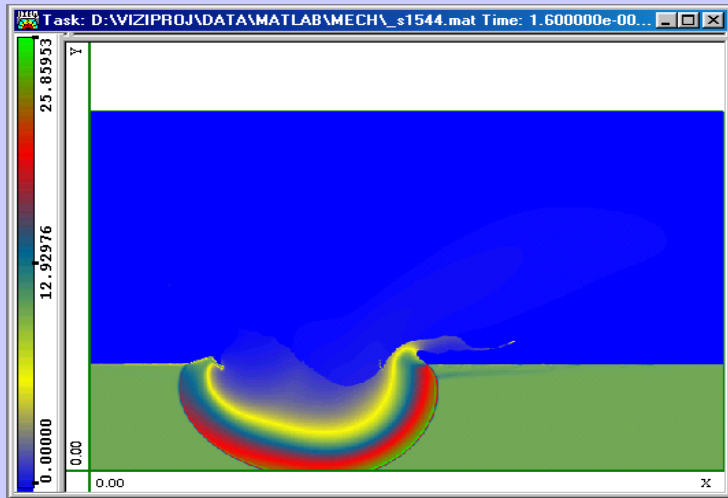


Fig. 23. (LLC)

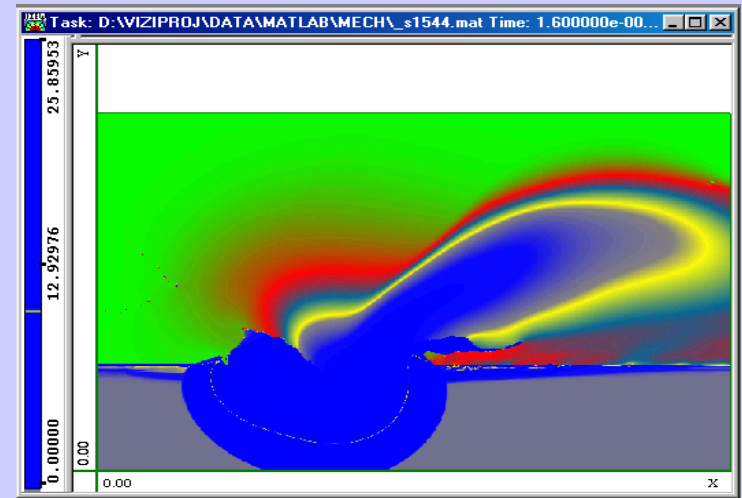


Fig. 24. (SLC)

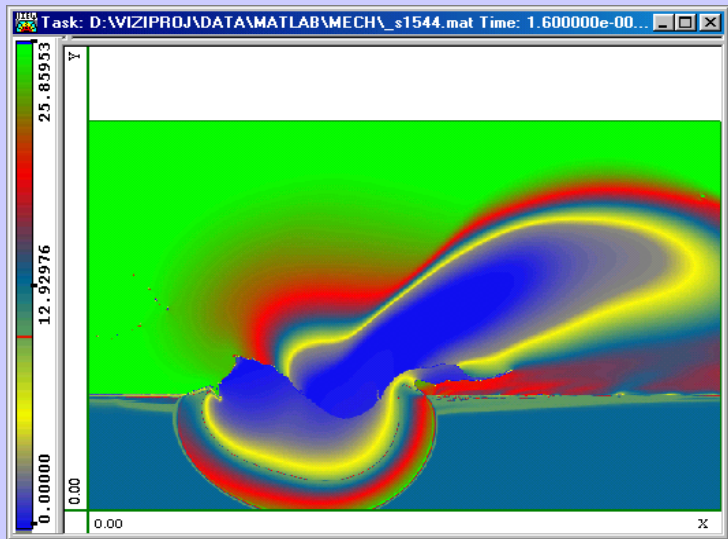


Fig. 25 (SLC+LLC)

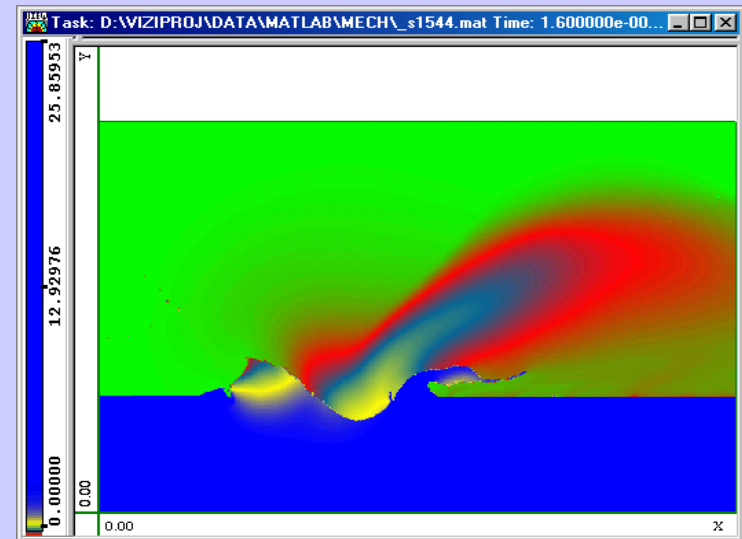


Fig. 26 the law of the reverse exponent