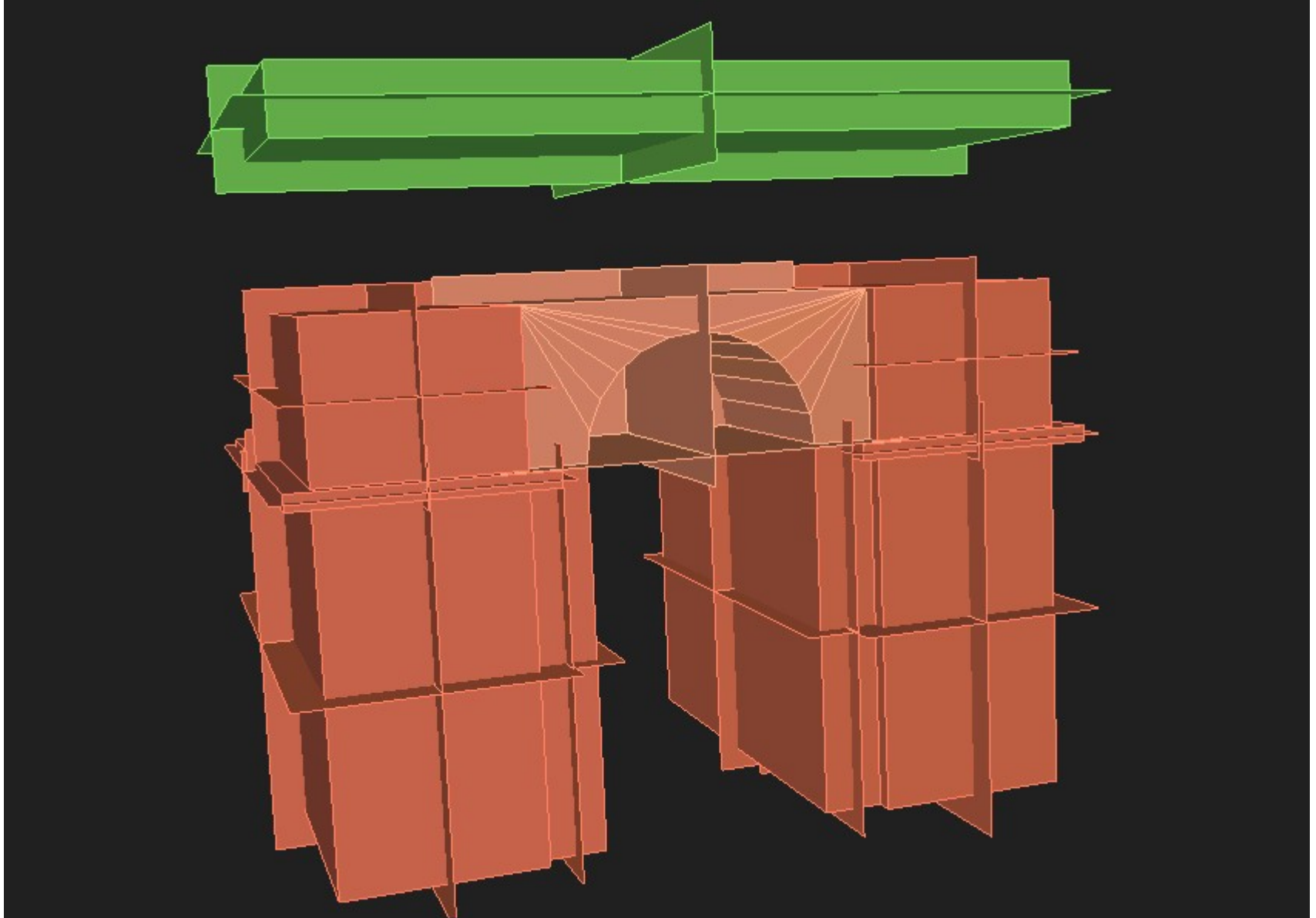


Examples of the parametric blocks



Model under construction

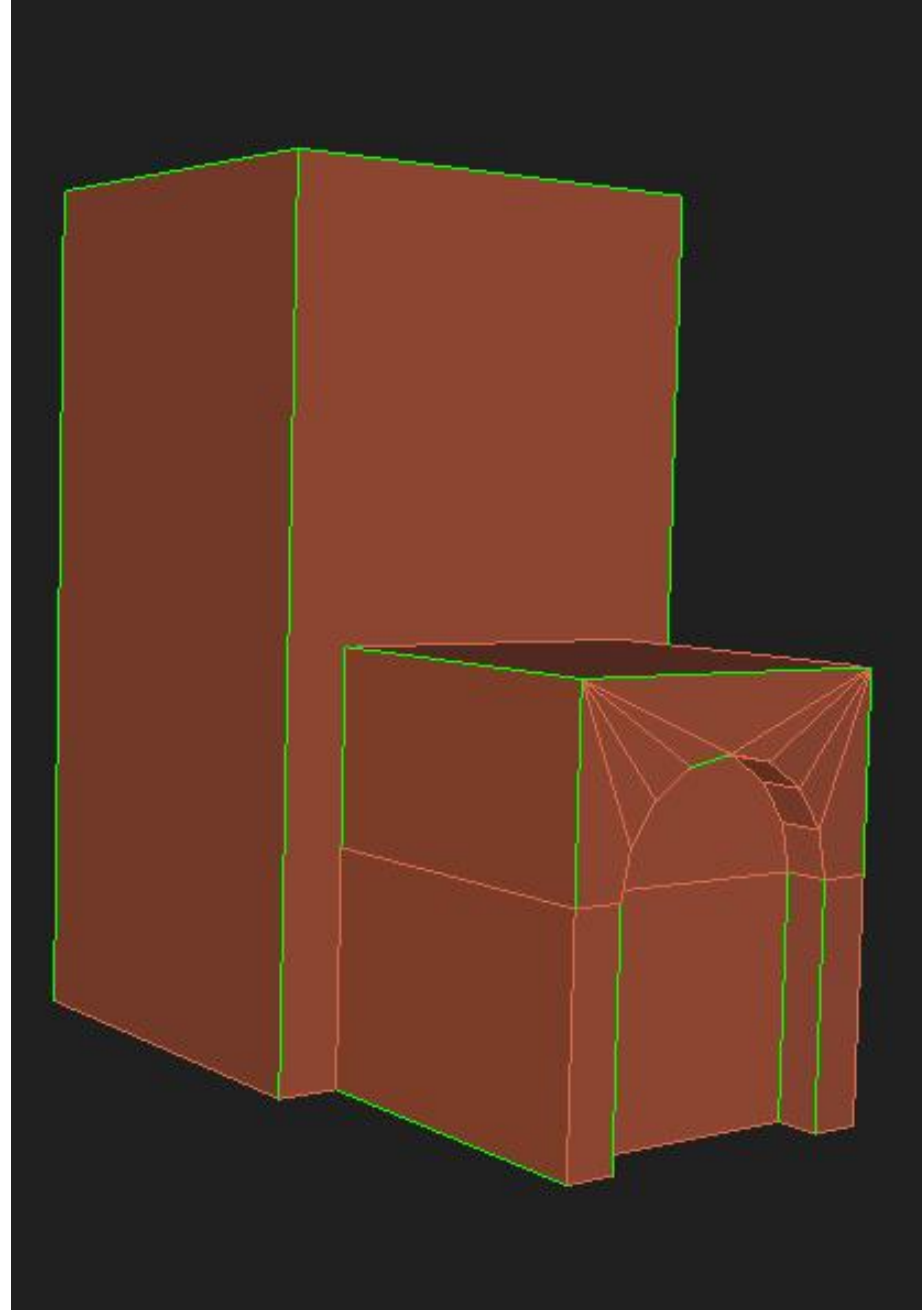
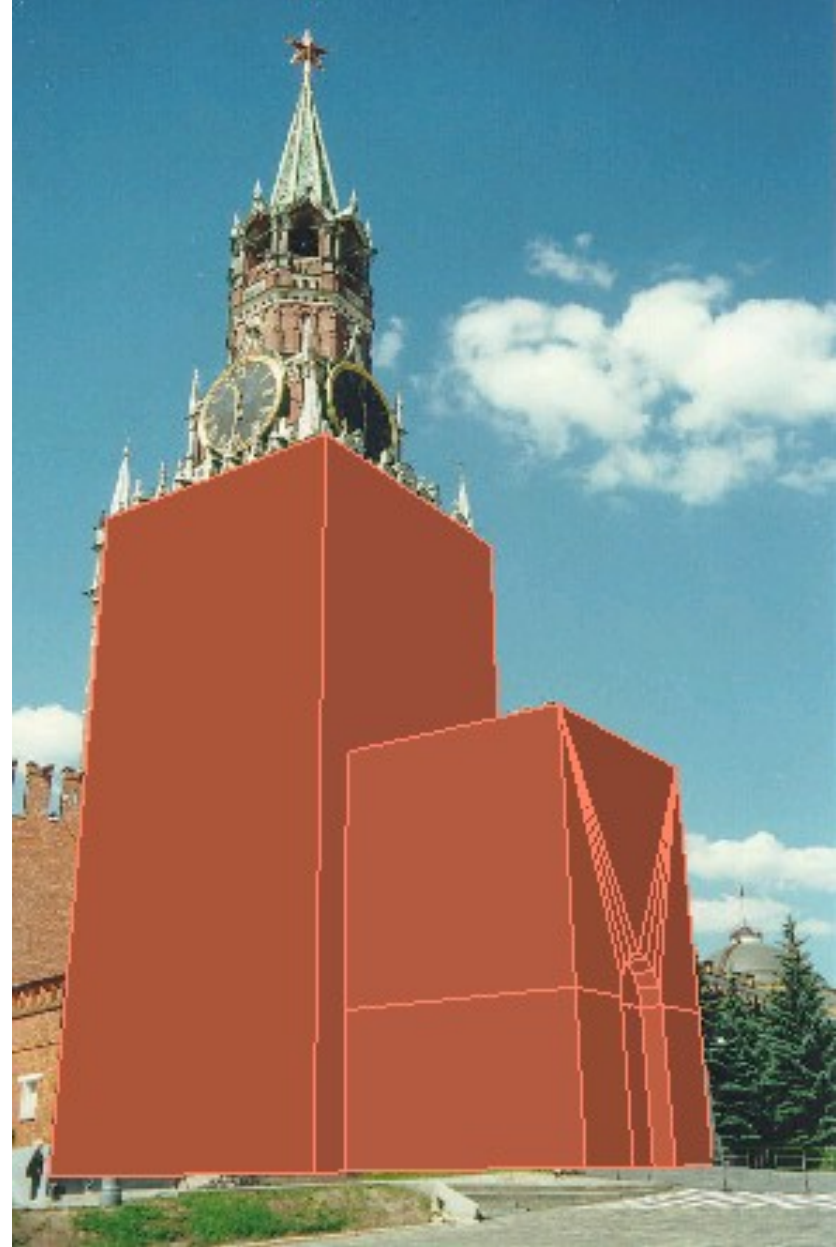


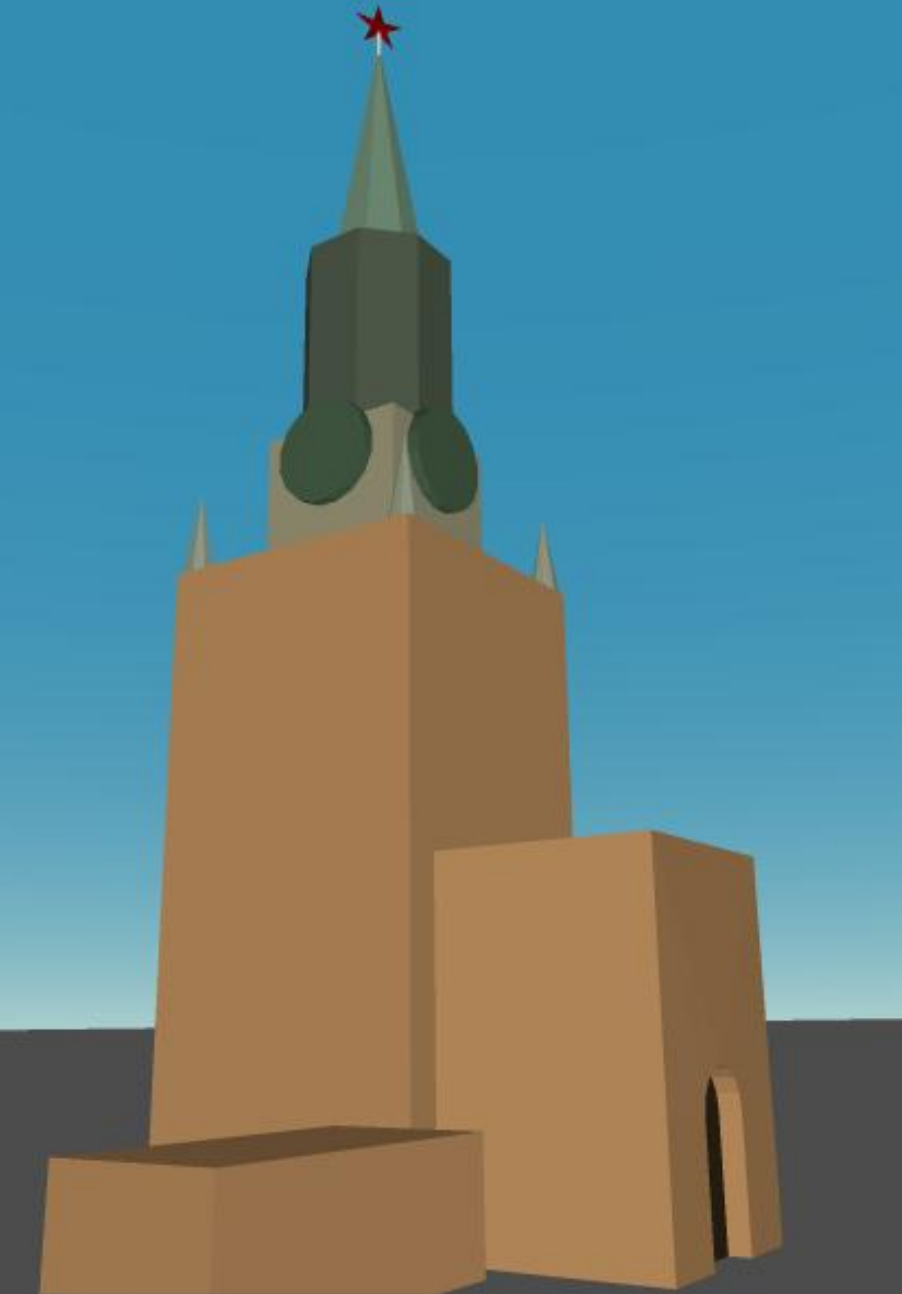
Image and model with marked edges



Image with imposed model
in wire-frame mode



Reconstructed model imposed
over image



Reconstructed model without and with textures
International Conference Graphicon 1999, Moscow, Russia, <http://www.graphicon.ru/>

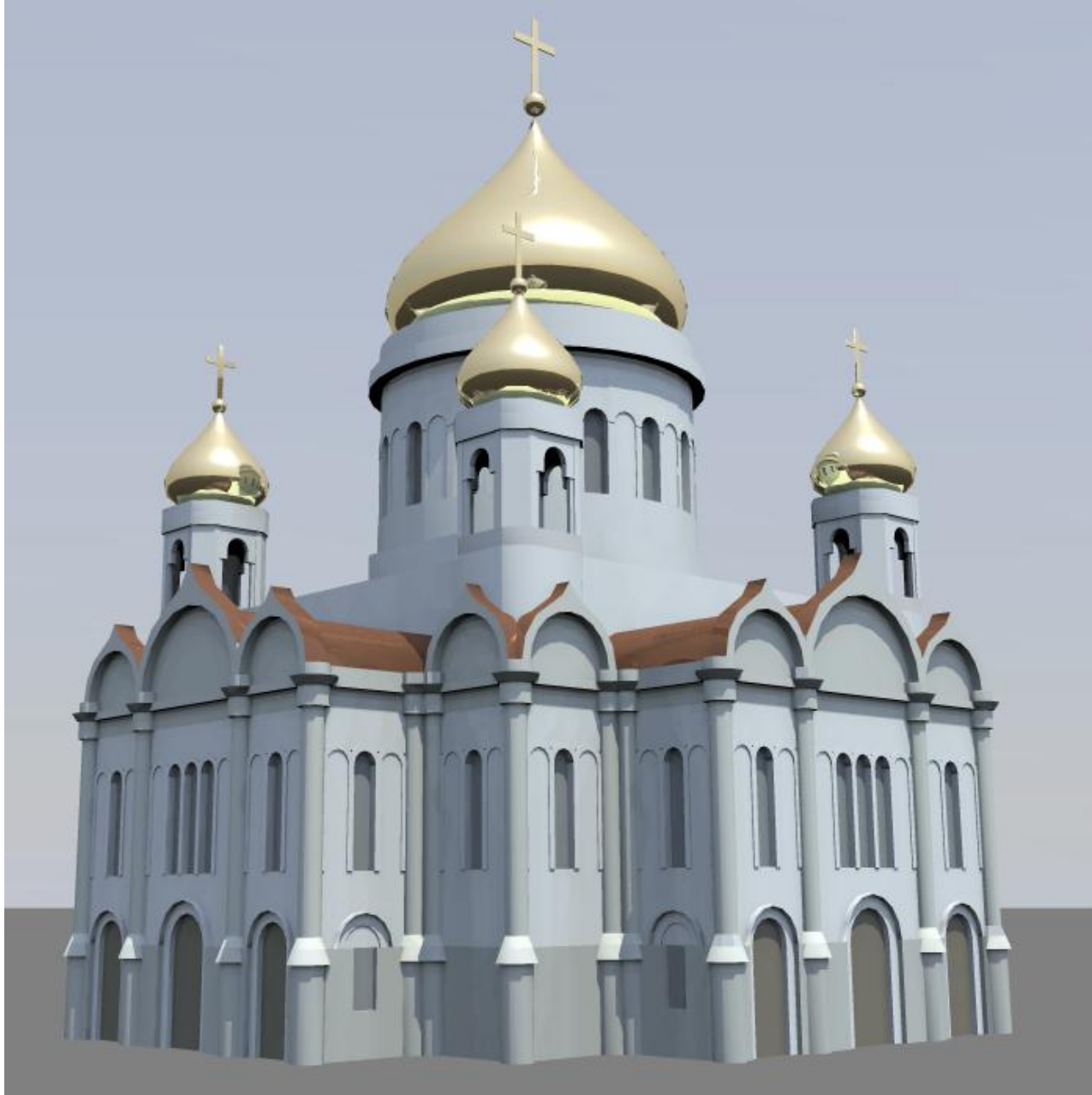


Model of the Ark de Triomphe textured from the single image



Mausoleum, Red Square, Moscow

International Conference Graphicon 1999, Moscow, Russia, <http://www.graphicon.ru/>



Cathedral of the Savior, Moscow

International Conference Graphicon 1999, Moscow, Russia, <http://www.graphicon.ru/>



Photomontage scene consisting from the ground plate

International Conference Graphicon 1999, Moscow, Russia, <http://www.graphicon.ru/>



Model of the car rendered over photomontage scene

International Conference Graphicon 1999, Moscow, Russia, <http://www.graphicon.ru/>





RAIFFEISENBANK

RA MN 202